

B- Line

B-Line S.r.l.
Via Galileo Galilei, 13/B
35030 - Sarmeola di Rubano (PD)
ITALY

T. +39 049 8978245
F. +39 049 633499
E. info@b-line.it
W. b-line.it

CARTELLA MATERIALI
/ MATERIALS REFERENCE CHART

ABS

POLIETILENE
/ POLYETHYLENE

POLIURETANO RIGIDO
/ RIGID POLYURETHANE

ACCIAIO
/ STEEL

CORDA IN POLIESTERE
/ POLYESTER CORD

LEGNO
/ WOOD

CRISTALLO
/ CRYSTAL GLASS

CEMENTO
/ CONCRETE



Bianco / White



Bianco / White Easy Clean



Bianco / White



Bianco / White



Nero / Black



Frassino naturale / Natural ash



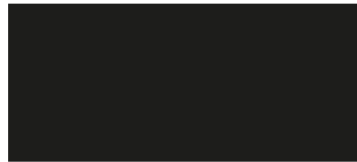
Trasparente / Clear



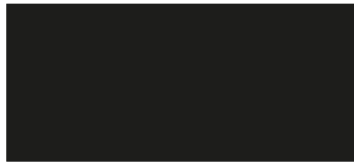
Concrete Grey



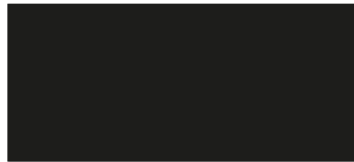
Nero / Black



Nero / Black



Nero / Black



Nero / Black



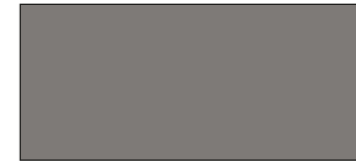
Brick



Frassino tinto nero /
Black stained ash



Bianco / White



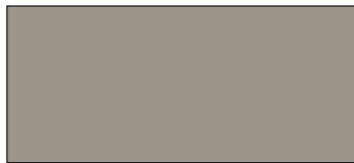
Lava Grey



Rosso / Red



Grigio Basalto / Basalt Grey



Tortora / Dove Grey



Grigio Antracite / Anthracite Grey



Stone



Faggio naturale / Natural beech



MDF



Tulip Yellow



Tornado Grey



Rosso Corallo / Coral Red



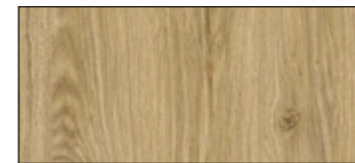
Sand



Sand



Bordeaux



Rovere naturale / Natural oak



Bianco / White



Sage Green



Honey



Pine



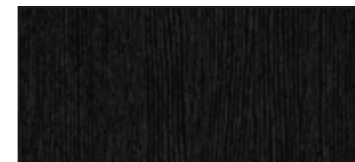
Graphite



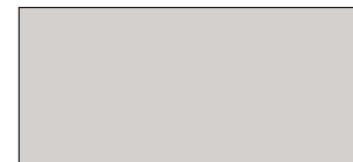
Graphite



Champagne



Rovere tinto nero /
Black stained oak



Grigio Luce / Light Grey



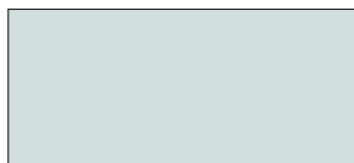
Verdigris



Grigio Luce / Light Grey



Light Water



Light Water



Emerald

LAMINATO
/ LAMINATE

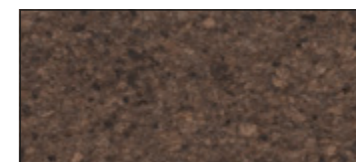
SUGHERO
/ CORK



Cumin



Bianco / White



Moka

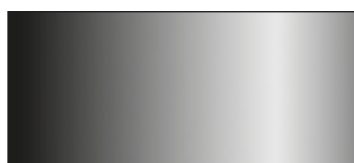


Alluminio / Aluminium

ABS
Colore speciale in edizione
limitata per i 50 anni del
Boby / Special limited edition
colour for Boby's 50 years
anniversary



Indigo



Cromato lucido /
Polished chrome

SS SOLIDS & STRIPES
SUNBRELLA

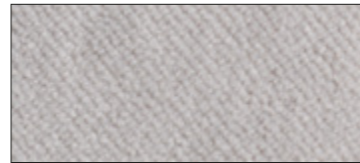
100% Acrilico /
Acrylic



TSS5453

VG GORGEOUS FLUKSO

100% PES FR – Trevira CS



TVG2153



TVG2158



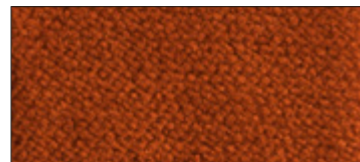
TVG2148



TVG2118



TVG2126



TVG2111

RX REMIX 2 KVADRAT

90% Lana vergine /
New wool
10% Nylon



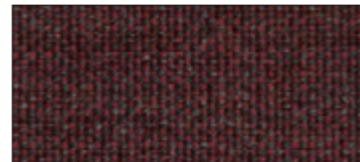
TRX123



TRX682



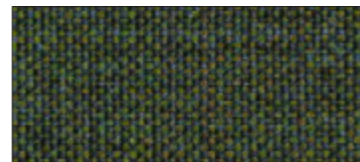
TRX173



TRX662



TRX743



TRX982

HE HERO KVADRAT

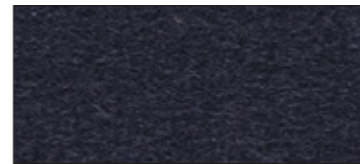
96% Lana vergine /
New wool
4% Nylon



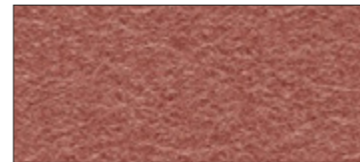
THE211



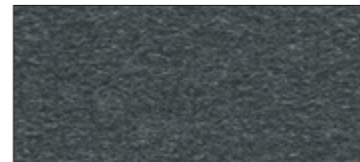
THE141



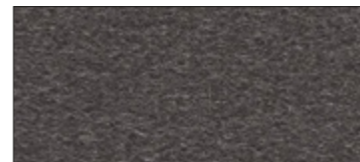
THE791



THE541



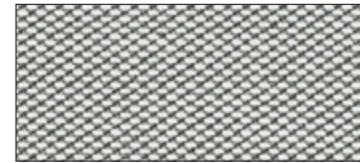
THE991



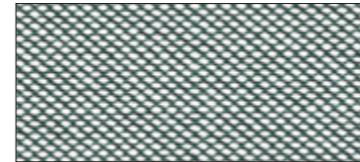
THE381

ST STEELCUT TRIO 3
KVADRAT

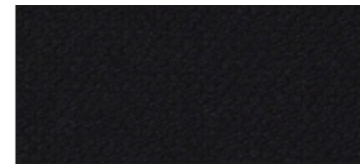
90% Lana vergine /
New wool
10% Nylon



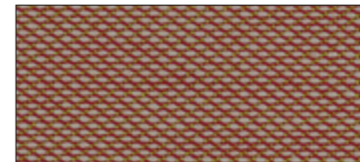
TST133



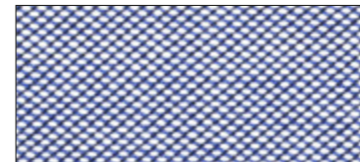
TST916



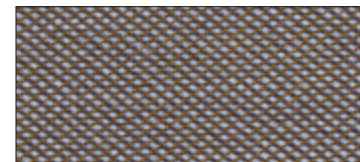
TST195



TST515



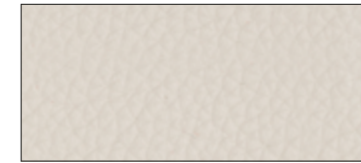
TST716



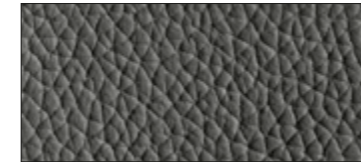
TST376

LN PANAMA LEATHER DANI

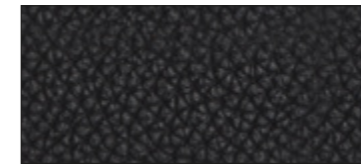
100% Pelli bovine europeae
/ European cow hides



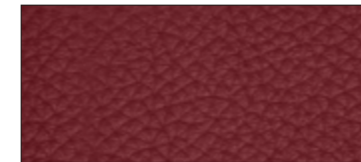
LN5506



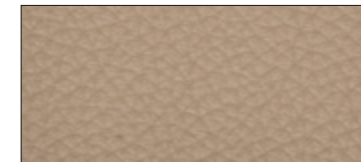
LN5290



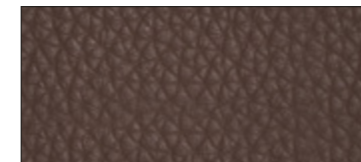
LN5300



LN5210



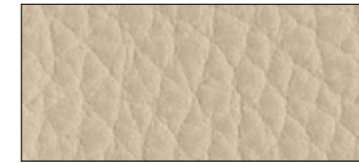
LN5320



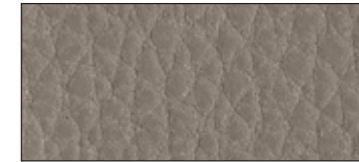
LN5400

FP PLATINUM FLUKSO

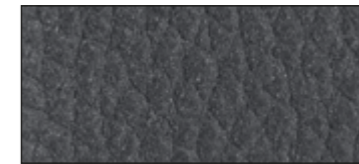
82% PVC
18% PES



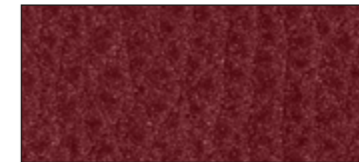
TFP5



TFP12



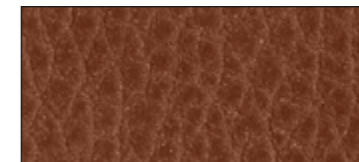
TFP22



TFP30



TFP36



TFP15

G GEMMA S PUGI RG

100% Poliestere – Trevira CS /
Polyester – Trevira CS



TG651



TG203

**SPECIFICHE TESSUTI
/ FABRIC FEATURES**

**Gorgeous
Flukso**

450 g/mq / g/sqm
100.000 Martindale



**Remix 2
Kvadrat**

415 g/mtl / g/lin.m
100.000 Martindale



0575/12

**Hero
Kvadrat**

580 g/mtl / g/lin.m
45.000 Martindale



0575/15

**Steelcut Trio 3
Kvadrat**

580 g/mtl / g/lin.m
45.000 Martindale



0575/17

**Panama
Dani**

sp / thk 1,0-1,2 mm

**resistenza allo strappo
/ tear resistance**
20 N | EN ISO 3377 -1

**resistenza alla flessione
/ flex resistance**

**nessuna rottura
in 50.000 cicli
/ no damage
in 50.000 cycles
EN ISO 5402**

**Solids & Stripes
Sunbrella**

260 g/mq / g/sqm

**resistenza del colore
ai raggi UV**
- outdoor 1000h
/ colour fastness UV
- outdoor 1000h
4-5 / ISO 105 B04



**Platinum
Flukso**

650 g/mq / g/sqm
100.000 Martindale



**Gemma S
Pugi rg**

400 g/mtl / g/lin.m
40.000 Martindale

