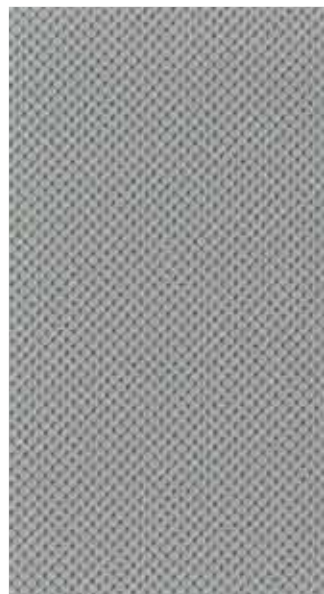
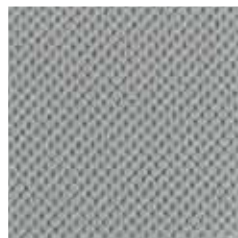


ATLANTIC



AN05



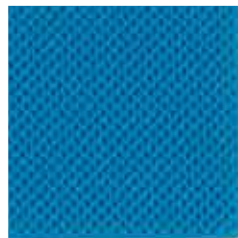
AN02



AN01



AN12



AN04



AN06



AN10

F



100% Polyester



353 g/m²



UNI 9175 CLASS 1 IM
EN 1021 1-2
NF D 60-013
NF - P 92-503:M3
ONORM B 3825 B1 3800-Q1 UK



UNI EN ISO 12947 - 2
110.000 Cicli/Cycles



EN ISO 105 B02 (5-7)
EN ISO 105 X12 (4-5)



Oeko-Tex®



AN08



AN07



AN03

COLUMBIA

Leather



On request



PC01



PC03



PC02



PC04



PC05



Bovine Hide



Genuine Leather



900 g/m²



EN ISO 1021 1-2
BS 5852 1990 SEC. 4 NI/0-1



EN ISO 105 B02 (5)
IUF 450/ UNI EN ISO 11640 (≥4)



PC06

CRAZY

Synthetic Leather



F



80%PVC
2%PU
18%PES



600 g/m²



UNI 9175 CLASS 1 IM
EN 1021 2



UNI EN ISO 5470-2
50.000 Cicli/Cycles



EN ISO 105 B02 (5-7)
EN ISO 105 X12 (4-5)



WATERPROOF



CZ07



CZ06



CZ03



CZ05



CZ02



CZ04



CZ01

CYCLE



G



72% Cradura
16% Lana/wool
12% Red. Lenzing FR™



437 g/m²



EN 1021-1/2
BS 5852-0/1
IMO Resolution MSC 307 (88)
Annex 1, Part 8
UNI 9175, Classe UNO I EMME
California TB 117, Class 1



UNI EN ISO 12947 - 2
500.000 Cicli/Cycles



EN ISO 105 B02 (6-7)
EN ISO 105 X12 (5)



Oeko-Tex®



CY02



CY07



CY04



CY08



CY01



CY03

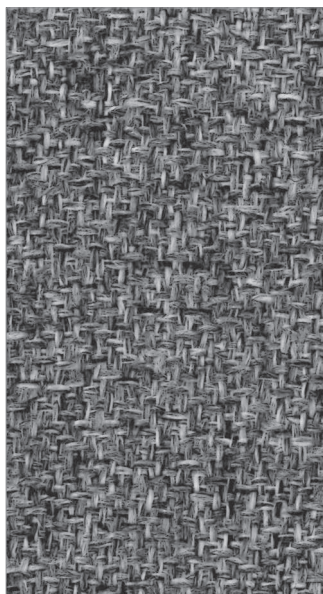


CY06



CY05

EXPO



D



100% Propitex fr bacteriostatic



UNI EN ISO 12947 - 2
100.000 Cicli/Cycles
UNI EN ISO 105-X12 (5)



350 g/m2



UNI 9175 classe 1IM
EN 1021 1-2:2006
BS 5852:2006 CRIB 5
7:2013, IMO 2010 FTP CODE



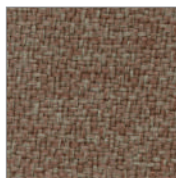
EN ISO 105 B02 (5)



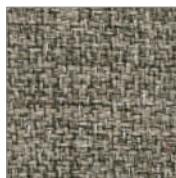
Sound Absorbing
UNI EN ISO 354:2003, UNI EN ISO
11654:1998, ASTM C423 - 09a



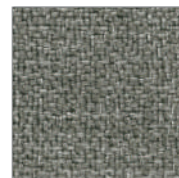
Oeko-Tex®



EX07



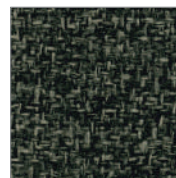
EX04



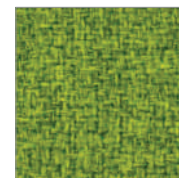
EX02



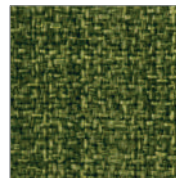
EX03



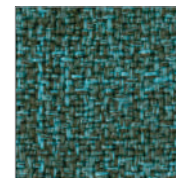
EX09



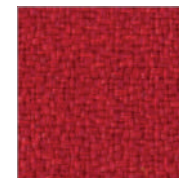
EX13



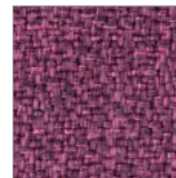
EX16



EX14



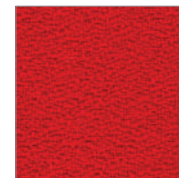
EX15



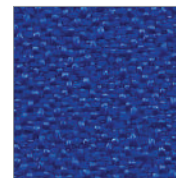
EX18



EX17



EX30



EX29



EX21

FLEXA BACKREST COLOURS



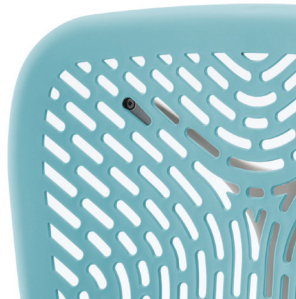
0999



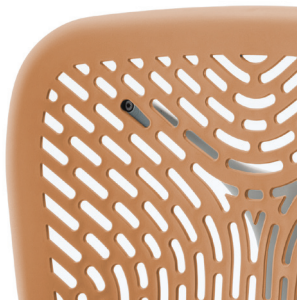
0901



0703



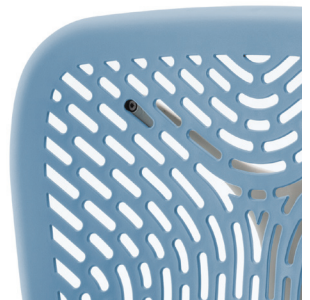
0604



0202



0602



0503

IKON EXTREMA

Synthetic Leather



G



63% PU
29% COT
8% PES



480 g/m²



BS 5852 CRIB 5
BS 5852-1 PART 1
IMO resolution A.652 (16): 1989
EN 1021-2
UNI 9175 classe 1 IM
TB 117 sez.E - p.1 (California)



UNI EN ISO 12947 - 2
150.000 Cicli/Cycles



EN ISO 105 B02 (5-6)



WATERPROOF



NO PHTHALATES



ANTI-FUNGAL
TREATMENT



KE10



KE09



KE06



KE01



KE02



KE03



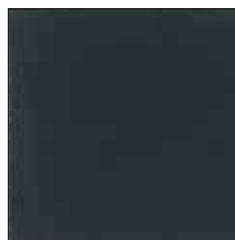
KE04



KE05



KE07



KE11



KE08

KING



D



100% Polyester Trevira CS



300 g/m²



UNI 9175 C1M
EN 1021 1-2
NF P 92501-7 M1
DIN 4102 B1
BS 5852 CRIB 5



UNI EN ISO 12947 - 2
100.000 Cicli/Cycles



EN ISO 105 B02 (6)
EN ISO 105 X12 (4-5)



Oeko-Tex®



KI35



KI50



KI27



KI17



KI14



KI05



KI25



KI02



KI23



KI01



KI29



KI71



KI34



KI33

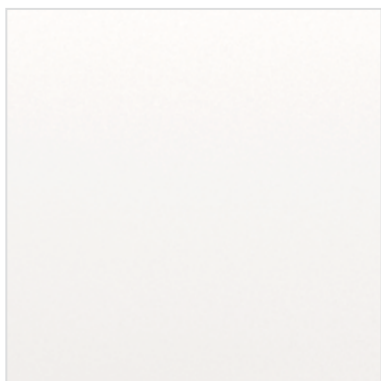


KI04



KI72

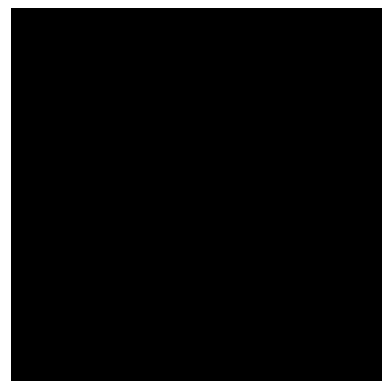
MATT LACQUERING



RAL 9010



RAL 3003



RAL 9005

Leather



G



PF08



PF16



PF06



PF03



PF04



PF01



PF20



PF11



PF13



PF10



PF09



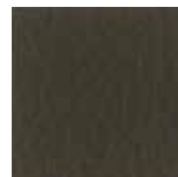
PF05



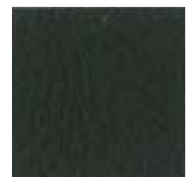
PF21



PF02



PF15



PF07



Bovine Hide



Genuine Leather



700 g/m²



EN ISO 1021 1-2
BS 5852 1990 SEC. 4 NI/0-1



EN ISO 105 B02 (5)
IUF 450/ UNI EN ISO 11640 (≥4)

LINE



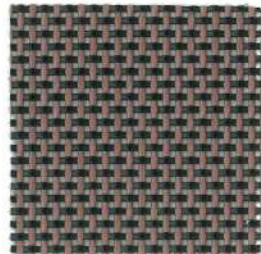
B4 



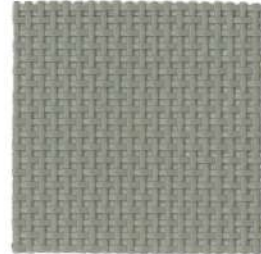
B3 



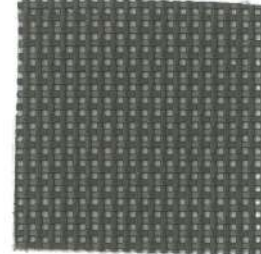
B1 



B5 



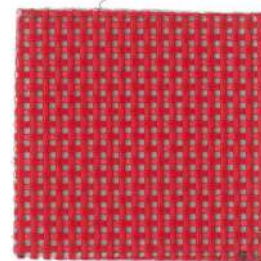
B7 



B6 



B2 



B8



B10



100% Polyester



500 g/m²



EN 1021 1-2
NF P 92-501 M2
DIN 4102-1 B1



UNI EN ISO 12947-2
120.000 Cicli/Cycles

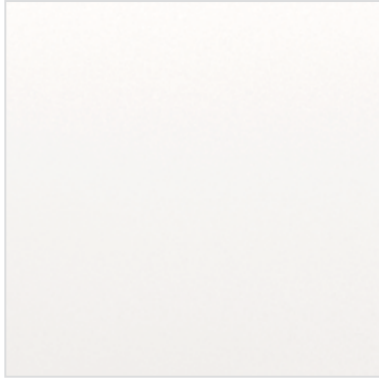


NF T30-036 ($\Delta E_{lab} < 3$)
QUVTEST (UVA 340/2000h)



Oeko-Tex®

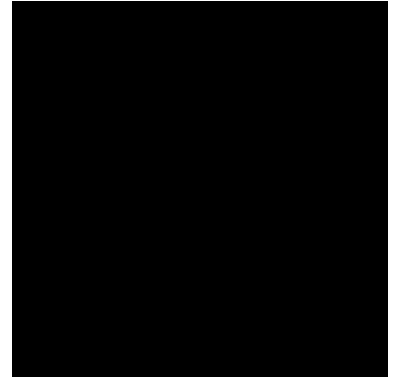
MATT LACQUERING



RAL 9010



RAL 3003



RAL 9005

PAINTING



BLEACHED LIGHT OAK
VENEERED PAINTED



WENGÈ

CLEANING AND MAINTENANCE

Keep away from heat and direct sunlight.

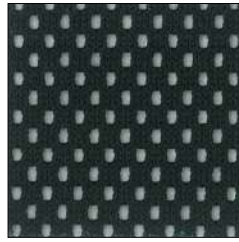
Cleaning: use a cloth dampened in slightly soapy water (with neutral soap).

The cleaning movement should be, as far as possible, parallel to the wood grain.

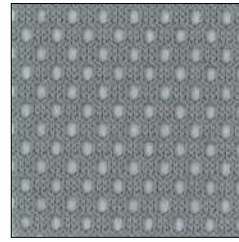
MICRO



N



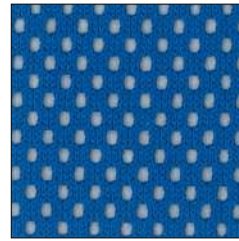
C1



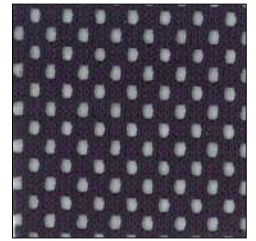
C2



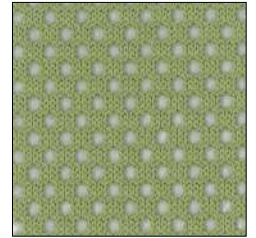
C3



C4



C5



C6



100% Polyester



350 g/m²



EN 1021 1-2



UNI EN ISO 12947 - 2
100.000 Cicli/Cycles



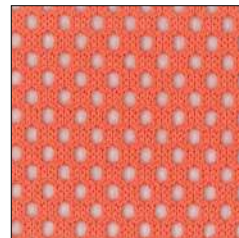
EN ISO 105 B02 (5)
EN ISO 105 X12 (4-5)



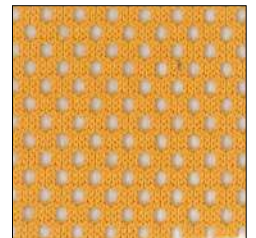
Oeko-Tex®



C9



C7

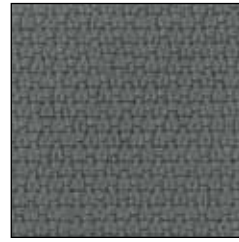


C8

MINI



MY13



MY12



MY01



MY03



MY04



MY05



MY08

E



MY09



MY06



MY07



MY10



MY11



MY02



100% Polyester Trevira CS



340 g/m²



UNI 9175 C1M
EN 1021 1-2
NF 92501-7 M1
DIN 4102 B1
BS 5852 CRIB 5



UNI EN ISO 12947 - 2
100.000 Cicli/Cycles



EN ISO 105 B02 (6)
EN ISO 105 X12 (4-5)



Oeko-Tex®

MINI MELANGE



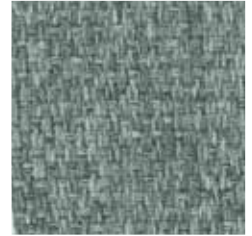
MN09



MN08



MN01



MN10



MN04



MN07



MN05



MN06



MN02



MN03

F



100% Polyester Trevira CS



340 g/m²



UNI 9175 C1
EN 1021 1-2
NF P 92-501 M1
DIN 4102 B1
BS 5852 CRIB 5



UNI EN ISO 12947 - 2
100.000 Cicli/Cycles



EN ISO 105 B02 (6)
EN ISO 105 X12 (4-5)



Oeko-Tex®

MOVING

Upholsteries - Finishings - Colours

The best and certified upholsteries. The smartest lacquerings and paintings. A world of colours and finishings choices.

LEGEND



Composition



Weight



Flammability



Abrasion Resistance
Martindale



Colour Fastness



Oeko-Tex®



Antimicrobial / Antiacarus



Genuine Leather

CLEANING AND MAINTENANCE

Ordinary cleaning: gently remove upholstery dust with a soft brush. Use a mild solution of neutral soap and water to be applied gently with a dampened cloth. Dry and revive the fabric by brushing again.

Periodically soften the leather by using a cloth dampened with water and neutral soap.

To avoid permanent stains, the lighters colours of the fabric should not be brought into contact with textiles and clothes coloured with unfixed dyes. We cannot guarantee the ability to remove unknown dyes from light coloured product.

IMPORTANT INFORMATION

Upholsteries might present slight differences in tonality compared to the samples.

Moving, to improve the technical and qualitative characteristics of production, reserves the right at any time to modify entirely or partially the content of the present catalogue even without notice.

MOVING



Via dell'Artigianato 1 - 36070 Trissino (VI) Italy

Tel. +39 0445 490777 - Fax. +39 0445 490008

info@moving.vi.it - www.moving.vi.it

PAINTING



BLEACHED LIGHT OAK
VENEERED PAINTED



WENGÈ

CLEANING AND MAINTENANCE

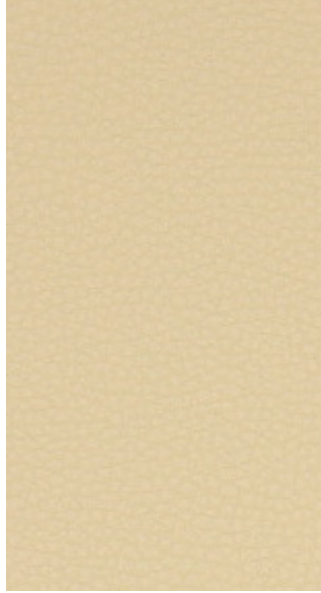
Keep away from heat and direct sunlight.

Cleaning: use a cloth dampened in slightly soapy water (with neutral soap).

The cleaning movement should be, as far as possible, parallel to the wood grain.

PLATINUM

Synthetic Leather



F



82% PVC 18% PES



650 g/m²



UNI 91751 IM
EN BS 585 2-1
DIN 4102-Teil1 p.6.2: B2
EN 1021 parte 1-2
IMO 2010 FTP CODE



UNI EN ISO 12947 - 2
100.000 Cicli/Cycles



EN ISO 105 B02 (6/7)
EN ISO 105 X12 (4/5)



WATERPROOF



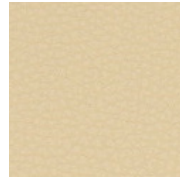
HYPOALLERGENIC



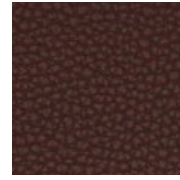
ANTI-FUNGAL
TREATMENT



NO PHTHALATES



PT05



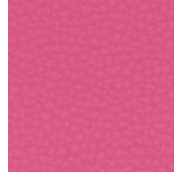
PT17



PT14



PT26



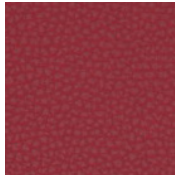
PT32



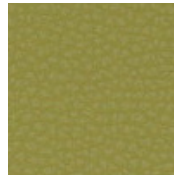
PT28



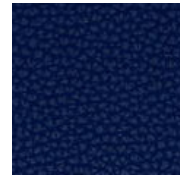
PT37



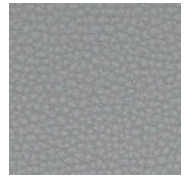
PT30



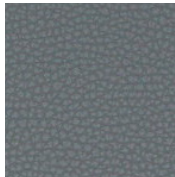
PT43



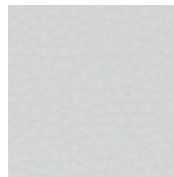
PT36



PT20



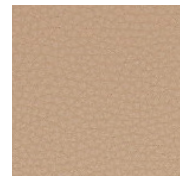
PT22



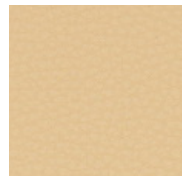
PT18



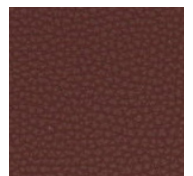
PT23



PT06



PT11



PT16

RADIO



D



RY02



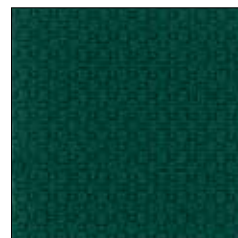
RY04



RY11



RY03



RY10



RY05



RY07



RY09



RY06



RY08



RY01



RY13



RY12



100% Polyester FR



400 g/m²



UNI 9175 C1M
EN 1021 1-2
NF 92501-7 M1
DIN 4102 B1
BS 5852 CRIB 5



UNI EN ISO 12947 - 2
80.000 Cicli/Cycles



EN ISO 105 B02 (6)
EN ISO 105 X12 (4-5)



Oeko-Tex®

RETE ATTIVA



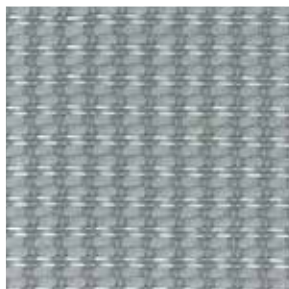
M



T1



T4



T3




T2

 55% Polyester
45% Polyamide

 280 g/m²

 EN 1021 1-2

 UNI EN ISO 12947-2
100.000 Cicli/Cycles

 EN ISO 105 B02 (6)

 Oeko-Tex®

ROCCIA



CC01



CC03



CC07



CC04



CC08



CC09



CC10



CC14



CC05



CC06



CC12



CC13

E



CC11



CC16



CC15



100% Polyester FR (Tr Cs)



250 g/m²



UNI 9175 C1
EN 1021 1-2
NF P 92-501 M1
DIN 4102 B1
BS 5852 CRIB 5



UNI EN ISO 12947 - 2
70.000 Cicli/Cycles



EN ISO 105 B02 (6)
EN ISO 105 X12 (4-5)



Oeko-Tex®

SILVIA

Synthetic Leather



D



69% PVC
1% Polyurethane
18% Cotton
12% Polyester



520 g/m²



IMO resolution A.652 (16): 1989
BS 5852-1 part 1
EN 1021-2
UNI 9175 classe 1 IM
TB 117 sez.E - p.1 (California)



ISO 5470 - 2
50.000 Cicli/Cycles



EN ISO 105 B02 (6)
EN ISO 105 X12 (4-5)



SL18



SL25



SL33



SL01



SL24



SL21



SL27



SL26



SL23



SL28



SL20



SL17



SL11



SL10



SL15



SL14



SL39



SL32



SL30

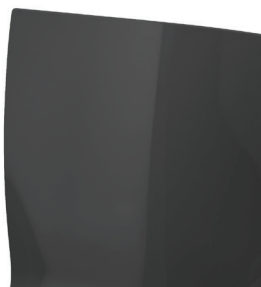


SL29



SL05

SLIM RAL



RAL 9005



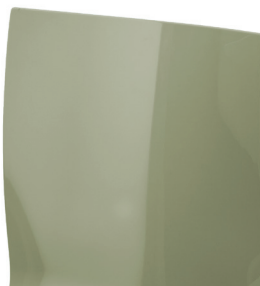
RAL 9016



RAL 3001



RAL 7046



RAL 7003



RAL 7032



RAL 5009



RAL 6017

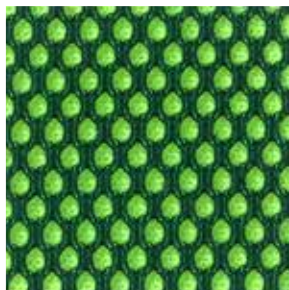


RAL 6027

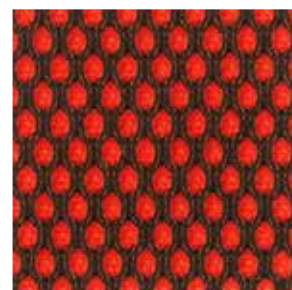
SPIDER



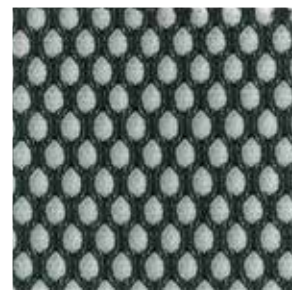
M



SP05



SP04



SP03



SP06



SP01



100% Polyester



390 g/m²



UNI EN 20344-5
52.000 Cicli/Cycles



UNI 7633 (>4)

SYNERGY



G



95% Virgin Wool
5% Polyamide
Non metallic dyestuffs



400 g/m²



EN 1021-1 / EN 1021-2
BS 7176 Low Hazard
UNI 9175 Classe 1IM
NF D 60-013
ÖNORM B 3825 & A 3800-1



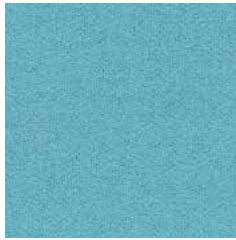
UNI EN ISO 12947 - 2
100.000 Cicli/Cycles
5 years guarantee



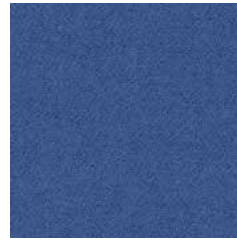
EN ISO 105 B02 (5)



EN ISO 105 X12 (4)



SY55



SY63



SY62



SY53



SY51



SY39



SY81



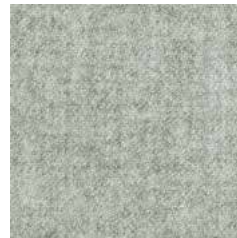
SY84



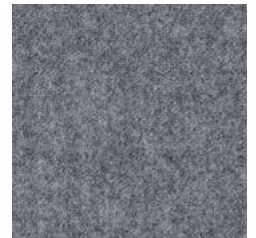
SY87



SY45



SY08



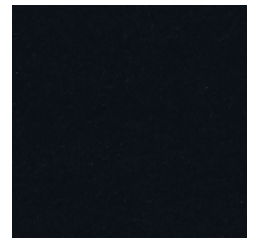
SY16



SY25



SY17



SY27

TRACK



TK04



TK03



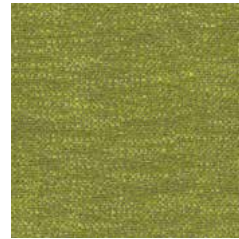
TK06



TK07



TK12



TK02



TK18



TK09



TK15



TK01



TK16

G



100% Trevira CS® Flame Retardant Polyester
Non metallic dyestuffs



550 g/m²



EN 1021-1 / EN 1021-2
BS 7176 Low Hazard
BS 5852 Ignition Source 5
BS 7176 Medium Hazard
DIN 4102 B1
NF P 92-507 M1
FMVSS 302
ECE REGULATION No.118



UNI EN ISO 12947 - 2
100.000 Cicli/Cycles
10 years guarantee



EN ISO 105 B02 (6)



EN ISO 105 X12 (4)

VENERE



D



VN61



VN64



VN65



VN60



VN31



VN35



VN20



VN51



VN45



100% Polypropylene FR



250 g/m²



UNI 9175 C1
EN 1021 1-2
BS 5852 CRIB 5



UNI EN ISO 12947
50.000 Cicli/Cycles



EN ISO 105 B02 (5)



Oeko-Tex®

VISUAL



G



MV02



MV08



MV20



MV04



MV09



MV27



MV28



MV19



MV23



MV13



MV25



MV29



MV30



MV12



100% Polyester



UNI EN ISO 12947 - 2 12945-2
60.000 Cicli/Cycles



440 g/m²



DIN 4102-1 B1 EN ISO 1021 1-2
BS 5852-1 CRIB5
UNI 9175 classe 1IM IMO FTP CODE 2010

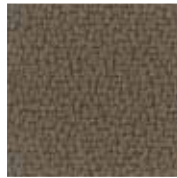


EN ISO 105-X12 B02 (4/5)

XTREME



F



YU91



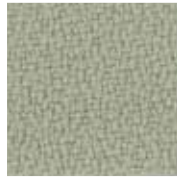
YU72



YU76



YU79



YU02



YU96



YU77



YU27



YU94



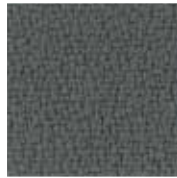
YU26



YU19



YU13



YU81



YU05



YU45



YU01



YU46



YU73



YU11



YU12



YU09



YU84



YU30



100% Polyester FR (Tr Cs)



328 g/m²



UNI 9175 CLASS 1 IM
EN 1021 1-2
BS 5852 CRIB 5
DIN 4102 B1



UNI EN ISO 12947
100.000 Cicli/Cycles



EN ISO 105 B02 (5)



Oeko-Tex®

PLASTIC COLOURS

P

PRETTY



0201

0603

ZIP



0502

0702

ERA



0601

0301



0502

0702



0302

0999



0501

0999



0302

0999



0601

0301



0501

0701